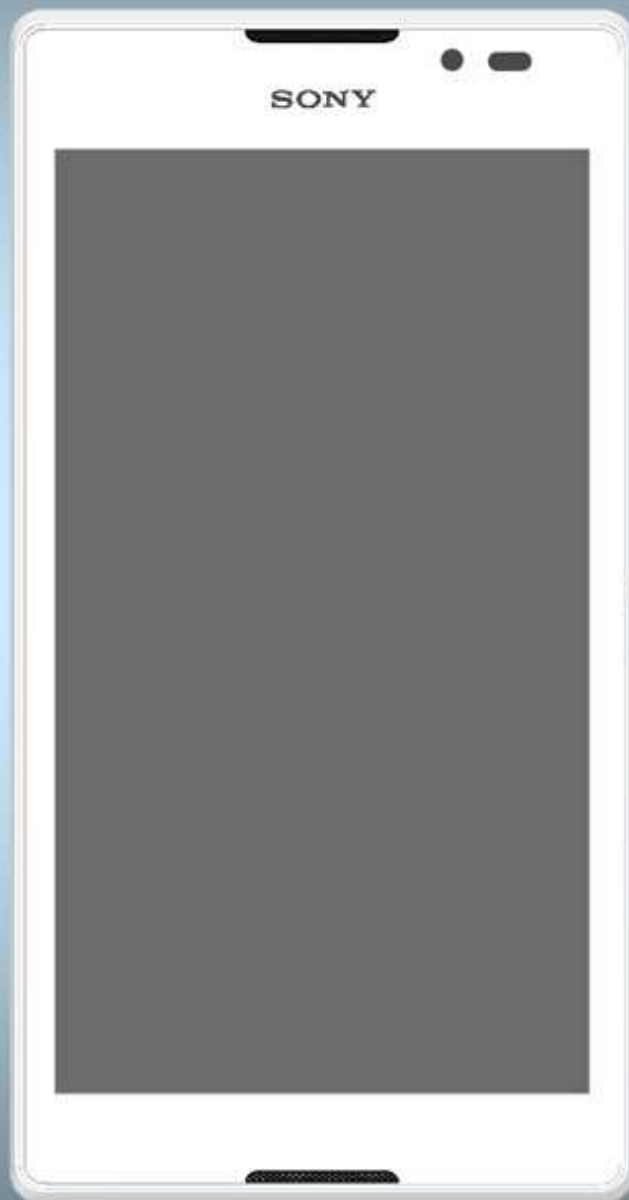


# Repair Movies

- mechanical -



*C2304, C2305, S39h*

## CONTENTS

<b>1</b>	<b>Movies .....</b>	<b>3</b>
1.1	Disassembly .....	3
1.2	Reassembly .....	3
<b>2</b>	<b>Revision History .....</b>	<b>4</b>

**To view the embedded repair movies in this document, Acrobat Reader version 8 (or later) and Flash Player version 8 (or later) must be installed on your computer.**

**For best picture quality, select “Actual size” or “100%” as zoom level in Acrobat Reader.  
To magnify while keeping an acceptable picture quality, increase the zoom level to 200%.**

**If the movies appear to be jerky or blurred when viewing on-line, this is probably caused by the connection speed being too slow.**

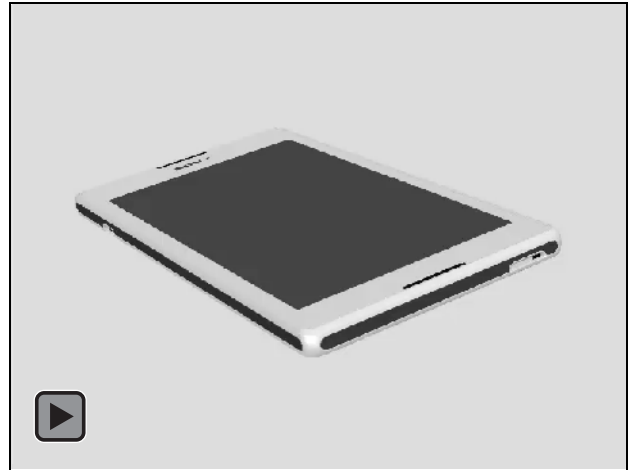
**In that case, right-click with the mouse on the document name and select Save Target As to download the repair movie document for off-line viewing.**

**For general information about repair movies, refer to  
1220-1333: Generic Repair Manual - mechanical**

## 1 Movies

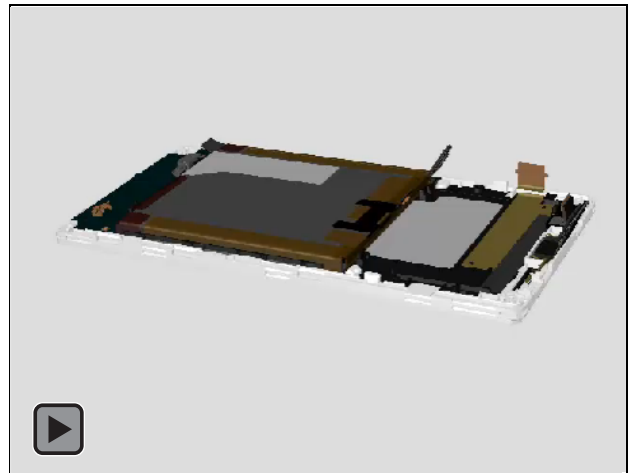
### 1.1 Disassembly

1. Battery Cover Assy
2. Rear Cover Assy
3. Main PBA (a) & Coaxial Cable (b)
4. Front Cover LCM TP Assy



### 1.2 Reassembly

1. Front Cover LCM TP Assy
2. Main PBA (a) & Coaxial Cable (b)
3. Rear Cover Assy
4. Battery Cover Assy



## 2 Revision History

Rev.	Date	Changes / Comments
1	2013-07-09	Initial release
2	2014-03-07	Update the cover page

+